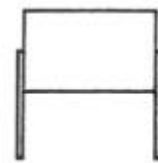
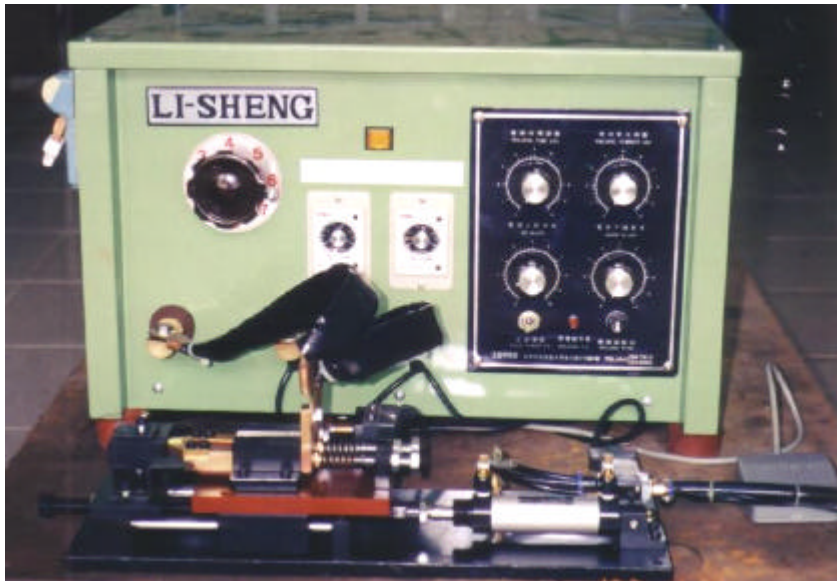


多功能電容器單邊接腳機 LIW-310

Multi-Purpose Capacitor Single Lead Welding Machine



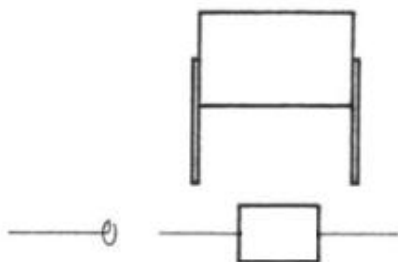
優點:

1. 樣品試作專用機.
2. 方便的調整方式.
3. 規格替換容易.
4. 熔接電極.
5. 隱藏式控制迴路.

規格:

素子材質: 端面 錫箔, 鋁箔, 金屬化膜.

形狀: 扁平, 丸筒形.



導線材質: CP 線或銅線.

外徑 0.5 -- 1.0mm

電源: 220VAC, 50/60Hz.

氣壓: 5Kgs

機台尺寸: 580x 600x 350 mm

機台重量: 約 80kgs

Advantage:

1. Special purpose for making trial or engineer samples.
2. Conveniences to adjust the setting.
3. Easy to change the specifications.
4. Electrodes melting method.
5. Hidden Controls circuit.

Specification:

Capacitor core: Surface: Tinfoil, aluminum foil, metallize Film.

Shape: Flat, pill tubular

Lead Wire: Outer diameter 0.5mm, 1.0mm
CP Wire or copper wire.

Power: 220VAC 50/60HZ

Air pressure: 5Kgs

Size: 580x 600x 350mm

Weight: 80Kgs